

# CERTIFICATE OF LOCATION OF GOVERNMENT CORNER

NORTHEAST Corner of Section 11, Township 108N, Range 39W

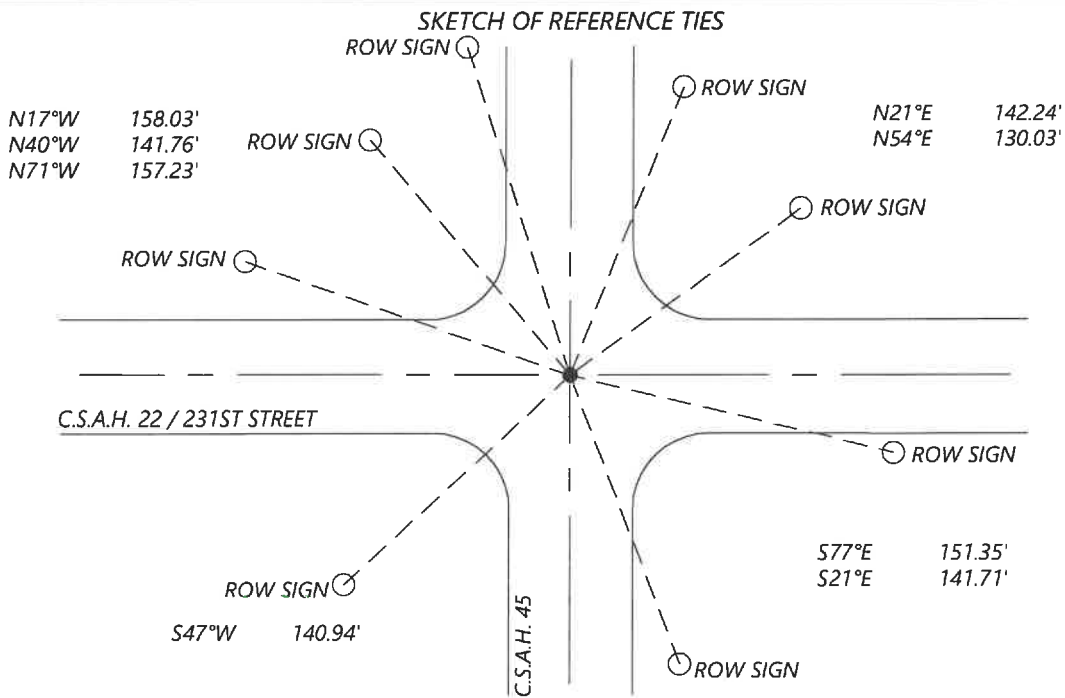
5th Principal Meridian, State of Minnesota, County of MURRAY

At the corner location shown on the sketch:

On 9/02/2020 found a PK NAIL FLUSH IN ASPHALT  
DATE

left monument as found       lowered monument       removed monument (explain)

On \_\_\_\_\_ placed a \_\_\_\_\_  
DATE



Statement of evidence for this corner location is on back of this page.

I hereby certify that this document was researched and prepared by me or under my direct supervision and that I am a licensed Land Surveyor under the laws of the State of Minnesota.

Signature [Handwritten Signature]  
 Date 6/17/2021 License No. 45874

Title:

- Land Surveyor       Professional Engineer  
 County Surveyor       County Engineer

OFFICE OF THE COUNTY RECORDER

County of Murray

I hereby certify that this document was filed in the Co.

Recorder's office at \_\_\_\_\_ M. on the \_\_\_\_\_ day of \_\_\_\_\_ A.D. 20 \_\_\_\_\_

County Recorder Karen Brown  
 by JUN 22 2021, Deputy

DOCUMENT NO. \_\_\_\_\_

**Statement of Evidence:**

Northeast Corner of Section 11, Township 108 North, Range 39 West, 5th Principal Meridian, Murray County, Minnesota.

1861 July, GLO Notes: Set post in mound.

Undated, Survey record for Section 12 shows that the government corner was found.

1963 February, Road plans for CSAH 22 show the corner at station 79+62.7.

1974 October, Survey record for Section 11 shows that a field stone was located and an 18" steel pin was placed above it.

Nail & cap in post	NE	59.30ft
Nail & cap in brace post	ENE	68.10ft
Yield sign post	SW	60.98ft

1991 April, Highway Department records show that a steel pin was located.

$\frac{3}{8}$ " rebar	NE	53.97ft
$\frac{3}{8}$ " rebar	SW	79.55ft
$\frac{3}{8}$ " rebar	SE	54.43ft

2003 April, Road plans for CSAH 45 shows the corner was assumed at PI station 313+75.46.

Coordinates: N: 221735.55 E: 574478.71

2008 September, A survey in Section 2 by Perry Zieske shows a found PK nail at the corner.

2020 September, Westwood Professional Services searched and found a PK nail. Coordinates fit with road plans and the 2008 Zieske survey. I accepted it as the corner and set new reference ties.

Analysis of the recovered data, field evidence and survey measurements, indicates that the monument found is the correct perpetuation of this corner. For additional information concerning this corner please contact Westwood Professional Services.